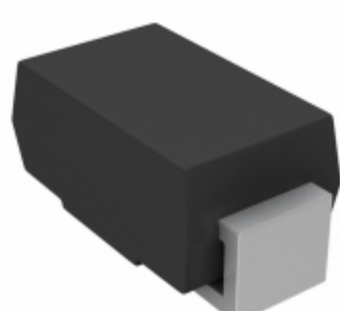


**SMA5J14CA-E3/61**



**Part Number:** SMA5J14CA-E3/61  
**Manufacturer:** Electro-Films (EFI) / Vishay  
**Description:** TVS DIODE 14V 23.2V DO214AC  
**Data sheet:** SMA5J5.0-40(C)A

**RoHS Status:** Lead free / RoHS Compliant  
**Ship From:** Hong Kong  
**Shipment Way:** DHL/Fedex/TNT/UPS/EMS

Images are for reference only.  
 See Product Specifications for product details.  
 Buy SMA5J14CA-E3/61 with confidence from  
 Component-World.HK, 1 Year Warranty

[Request For Quotation](#)

**PRODUCT PARAMETER**

<b>Part Number</b>	SMA5J14CA-E3/61	<b>Manufacturer</b>	<a href="#">Electro-Films (EFI) / Vishay</a>
<b>Description</b>	TVS DIODE 14V 23.2V DO214AC	<b>Lead Free Status / RoHS Status</b>	Lead free / RoHS Compliant
<b>Quantity Available</b>	447251 pcs	<b>Data sheet</b>	<a href="#">SMA5J5.0-40(C)A</a>
<b>Category</b>	<a href="#">Circuit Protection</a>	<b>Voltage - Reverse Standoff (Typ)</b>	14V
<b>Voltage - Clamping (Max) @ 1pp</b>	23.2V	<b>Voltage - Breakdown (Min)</b>	15.6V
<b>Type</b>	Zener	<b>Supplier Device Package</b>	DO-214AC (SMA)
<b>Series</b>	TransZorb®	<b>Power Line Protection</b>	No
<b>Power - Peak Pulse</b>	500W	<b>Packaging</b>	Tape & Reel (TR)
<b>Package / Case</b>	DO-214AC, SMA	<b>Operating Temperature</b>	-55°C ~ 150°C (TJ)
<b>Mounting Type</b>	Surface Mount	<b>Moisture Sensitivity Level (MSL)</b>	1 (Unlimited)
<b>Lead Free Status / RoHS Status</b>	Lead free / RoHS Compliant	<b>Current - Peak Pulse (10/1000µs)</b>	21.6A
<b>Capacitance @ Frequency</b>	-	<b>Bidirectional Channels</b>	1
<b>Base Part Number</b>	SMA5J	<b>Applications</b>	General Purpose

Component-World.com is a Reliable Stocking Distributor of Electronic Components. We specialize in all Electro-Films (EFI) / Vishay series electronic components. We have 447251 pieces of Electro-Films (EFI) / Vishay SMA5J14CA-E3/61 in stock available now. Request a quote from electronics components distributor at Component-World.com, our sales team will contact you within 24 hours.  
 RFQ Email: [info@Components-World.com](mailto:info@Components-World.com)

**RELATED PRODUCTS**

	<b>Part#:</b> <a href="#">SMA5J14HE3/61</a> <b>Description:</b> TVS DIODE 14V 25.8V DO214AC	<b>Manufacturers:</b> <a href="#">Electro-Films (EFI) / Vishay</a>	<a href="#">RFQ</a>
	<b>Part#:</b> <a href="#">SMA5J14CAHE3/5A</a> <b>Description:</b> TVS DIODE 14V 23.2V DO214AC	<b>Manufacturers:</b> <a href="#">Electro-Films (EFI) / Vishay</a>	<a href="#">RFQ</a>
	<b>Part#:</b> <a href="#">SMA5J13HE3/61</a> <b>Description:</b> TVS DIODE 13V 23.8V DO214AC	<b>Manufacturers:</b> <a href="#">Electro-Films (EFI) / Vishay</a>	<a href="#">RFQ</a>
	<b>Part#:</b> <a href="#">SMA5J14C-E3/61</a> <b>Description:</b> TVS DIODE 14V 25.8V DO214AC	<b>Manufacturers:</b> <a href="#">Electro-Films (EFI) / Vishay</a>	<a href="#">RFQ</a>
	<b>Part#:</b> <a href="#">SMA5J14-E3/61</a> <b>Description:</b> TVS DIODE 14V 25.8V DO214AC	<b>Manufacturers:</b> <a href="#">Electro-Films (EFI) / Vishay</a>	<a href="#">RFQ</a>
	<b>Part#:</b> <a href="#">SMA5J14CHE3/61</a> <b>Description:</b> TVS DIODE 14V 25.8V DO214AC	<b>Manufacturers:</b> <a href="#">Electro-Films (EFI) / Vishay</a>	<a href="#">RFQ</a>
	<b>Part#:</b> <a href="#">SMA5J14AHE3/5A</a> <b>Description:</b> TVS DIODE 14V 23.2V DO214AC	<b>Manufacturers:</b> <a href="#">Electro-Films (EFI) / Vishay</a>	<a href="#">RFQ</a>
	<b>Part#:</b> <a href="#">SMA5J14CA-M3/5A</a> <b>Description:</b> TVS DIODE 14V 23.2V DO214AC	<b>Manufacturers:</b> <a href="#">Electro-Films (EFI) / Vishay</a>	<a href="#">RFQ</a>
	<b>Part#:</b> <a href="#">SMA5J14A-E3/61</a> <b>Description:</b> TVS DIODE 14V 23.2V DO214AC	<b>Manufacturers:</b> <a href="#">Electro-Films (EFI) / Vishay</a>	<a href="#">RFQ</a>
	<b>Part#:</b> <a href="#">SMA5J15-E3/5A</a> <b>Description:</b> TVS DIODE 15V 26.9V DO214AC	<b>Manufacturers:</b> <a href="#">Electro-Films (EFI) / Vishay</a>	<a href="#">RFQ</a>
	<b>Part#:</b> <a href="#">SMA5J14CHE3/5A</a> <b>Description:</b> TVS DIODE 14V 25.8V DO214AC	<b>Manufacturers:</b> <a href="#">Electro-Films (EFI) / Vishay</a>	<a href="#">RFQ</a>
	<b>Part#:</b> <a href="#">SMA5J14CA-E3/5A</a> <b>Description:</b> TVS DIODE 14V 23.2V DO214AC	<b>Manufacturers:</b> <a href="#">Electro-Films (EFI) / Vishay</a>	<a href="#">RFQ</a>
	<b>Part#:</b> <a href="#">SMA5J14C-E3/5A</a> <b>Description:</b> TVS DIODE 14V 25.8V DO214AC	<b>Manufacturers:</b> <a href="#">Electro-Films (EFI) / Vishay</a>	<a href="#">RFQ</a>
	<b>Part#:</b> <a href="#">SMA5J14-E3/5A</a> <b>Description:</b> TVS DIODE 14V 25.8V DO214AC	<b>Manufacturers:</b> <a href="#">Electro-Films (EFI) / Vishay</a>	<a href="#">RFQ</a>
	<b>Part#:</b> <a href="#">SMA5J14A-E3/5A</a> <b>Description:</b> TVS DIODE 14V 23.2V DO214AC	<b>Manufacturers:</b> <a href="#">Electro-Films (EFI) / Vishay</a>	<a href="#">RFQ</a>
	<b>Part#:</b> <a href="#">SMA5J14CA-M3/61</a> <b>Description:</b> TVS DIODE 14V 23.2V DO214AC	<b>Manufacturers:</b> <a href="#">Electro-Films (EFI) / Vishay</a>	<a href="#">RFQ</a>
	<b>Part#:</b> <a href="#">SMA5J14AHE3/61</a> <b>Description:</b> TVS DIODE 14V 23.2V DO214AC	<b>Manufacturers:</b> <a href="#">Electro-Films (EFI) / Vishay</a>	<a href="#">RFQ</a>
	<b>Part#:</b> <a href="#">SMA5J14CAHE3/61</a> <b>Description:</b> TVS DIODE 14V 23.2V DO214AC	<b>Manufacturers:</b> <a href="#">Electro-Films (EFI) / Vishay</a>	<a href="#">RFQ</a>
	<b>Part#:</b> <a href="#">SMA5J14HE3/5A</a> <b>Description:</b> TVS DIODE 14V 25.8V DO214AC	<b>Manufacturers:</b> <a href="#">Electro-Films (EFI) / Vishay</a>	<a href="#">RFQ</a>
	<b>Part#:</b> <a href="#">SMA5J15-E3/61</a> <b>Description:</b> TVS DIODE 15V 26.9V DO214AC	<b>Manufacturers:</b> <a href="#">Electro-Films (EFI) / Vishay</a>	<a href="#">RFQ</a>

**Related keywords for SMA5J14CA-E3/61**

<a href="#">Electro-Films (EFI) / Vishay SMA5J14CA-E3/61</a>	<a href="#">SMA5J14CA-E3/61 distributor</a>	<a href="#">SMA5J14CA-E3/61 supplier</a>	<a href="#">SMA5J14CA-E3/61 price</a>
<a href="#">SMA5J14CA-E3/61 download datasheet</a>	<a href="#">SMA5J14CA-E3/61 datasheet</a>	<a href="#">SMA5J14CA-E3/61 stock</a>	<a href="#">buy SMA5J14CA-E3/61</a>
<a href="#">Electro-Films (EFI) / Vishay SMA5J14CA-E3/61</a>	<a href="#">Electro-Films (EFI) / Vishay SMA5J14CA-E3/61</a>	<a href="#">Vishay Electro-Films SMA5J14CA-E3/61</a>	<a href="#">Phoenix Passive Components / Vishay SMA5J14CA-E3/61</a>